

CHOOSE  CHESTER

CDA Annual Banquet
January 30, 2024

CURRENT PROJECT STATUS



Project Status

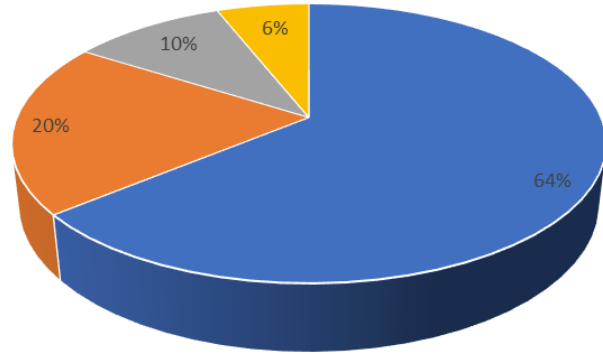
2023	YTD	Declined	Open	YTD Lost	YTD Win
Direct	50	0	22	25	2
SC Commerce	17	2	9	5	2
CLT Alliance	9	2	5	4	0
I-77 Alliance	11	13	3	8	0
Duke Energy	0	0	0	0	0
TOTAL	87	17	25	42	4

CURRENT PROJECT STATUS

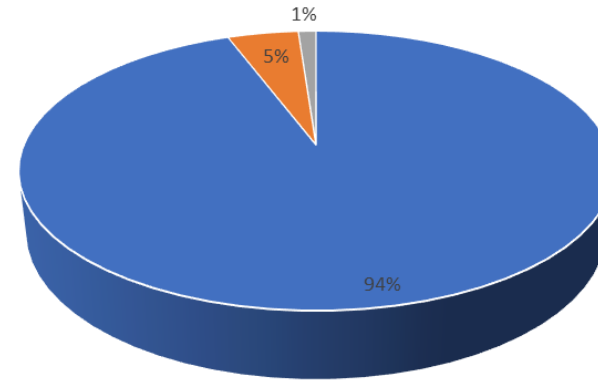


Open Projects	Leads	
Direct	32	64%
SC Commerce	10	20%
CLT Alliance	5	10%
I-77 Alliance	3	6%
Duke Energy	0	0%
TOTAL	50	

YTD-2023		
Attraction	82	94.3%
Expansion	4	4.6%
Retention	1	1.1%
TOTAL	87	

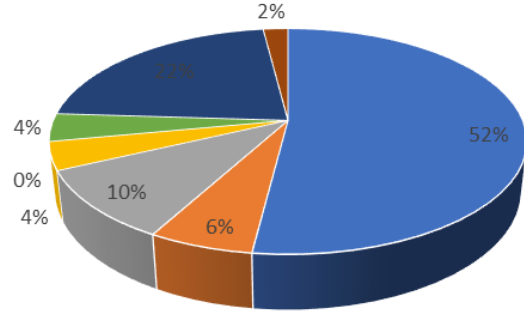


■ Direct ■ SC Commerce ■ CLT Alliance ■ I-77 Alliance

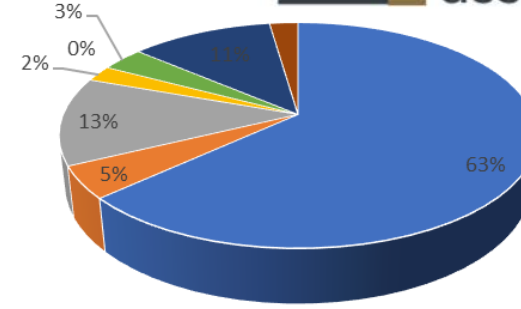


■ Attraction ■ Expansion ■ Retention

CURRENT PROJECT STATUS



- Manufacturing
- Trade/Recycling
- Distribution
- Technology
- Office/Headquarters
- Service/R&D
- Product Development
- Other



- Manufacturing
- Trade/Recycling
- Distribution
- Technology
- Office/Headquarters
- Service/R&D
- Product Development
- Other

Year to Date by Sector:

	All Open		YTD-2023	
Manufacturing	26	52%	55	63%
Trade/Recycling	3	6%	4	5%
Distribution	5	10%	11	13%
Technology	2	4%	2	2%
Office/Headquarters	0	0%	0	0%
Service/R&D	2	4%	3	3%
Product Development	11	22%	10	11%
Other	1	2%	2	2%
TOTAL	50		87	

CURRENT PROJECT STATUS

Top Industries*

- All Open

Transportation & Warehousing	8 projects	22%
Chemicals & Pharmaceuticals	7	19%
Motor Vehicles & Parts	4	11%

- YTD-2023

Transportation & Warehousing	13 projects	18%
Chemicals & Pharmaceuticals	12	17%
Motor Vehicles & Parts	8	11%

*Excludes Unknown and Other, including Product Development

CURRENT PROJECT STATUS



Year to Date by Investment Range:	All Open		YTD-2023	
< \$2.5 million	4	17%	8	20%
\$2.5 - \$5 million	2	8%	4	10%
\$5 - \$10 million	1	4%	3	8%
\$10 - \$50 million	2	8%	8	20%
\$50 - \$100 million	3	13%	1	3%
\$100 - \$150 million	3	13%	6	15%
\$150+ million	9	38%	10	25%
Unknown	26	-	47	-
TOTAL	50		87	

Year to Date by Jobs Range:	All Open		YTD-2023	
None	6	19%	7	14%
< 10 jobs	6	19%	9	18%
11 to 50 jobs	5	16%	11	22%
51 to 100 jobs	4	13%	6	12%
101 to 200 jobs	4	13%	6	12%
201 to 500 jobs	4	13%	8	16%
500+ jobs	3	9%	4	8%
Unknown	18	-	36	-
TOTAL	50		87	

CURRENT PROJECT STATUS



Announcements – YTD-2023

Jan	P2047	Great Falls Whitewater	\$69,000,000	0
Jan	P2256	Noble Oil	\$2,000,000	20
Feb	P1840	Luck Stone	\$35,180,000	28
Feb	P2228	IKO Industries	\$363,000,000	180
Feb	P2271	ATI Specialty Materials	\$2,900,000	0
Feb	P2275	Quiet, Inc.	\$20,000,000	2
Mar	P2187	Rutabaga-Birdseye Renewables	\$75,000,000	0
Mar	P2247	Albemarle Corporation	\$1,300,000,000	307
April	P2214	Confidential	\$2,000,000	15
May	P2280	Prime Rock Energy Capital	\$25,710,640	21
June	P2246	Kuester Commercial	\$3,400,000	0
Sept	P2368	Stratan, Inc.	\$1,500,000	10
Oct	P2341	Morcon Tissue	\$10,009,422	10
Nov	P2364	Thomas Concrete	\$2,000,000	5
TOTAL			\$1,971,520,062	641

JANUARY



CHOOSE  CHESTER

FEBRUARY



\$35.2 million
28 jobs



FEBRUARY

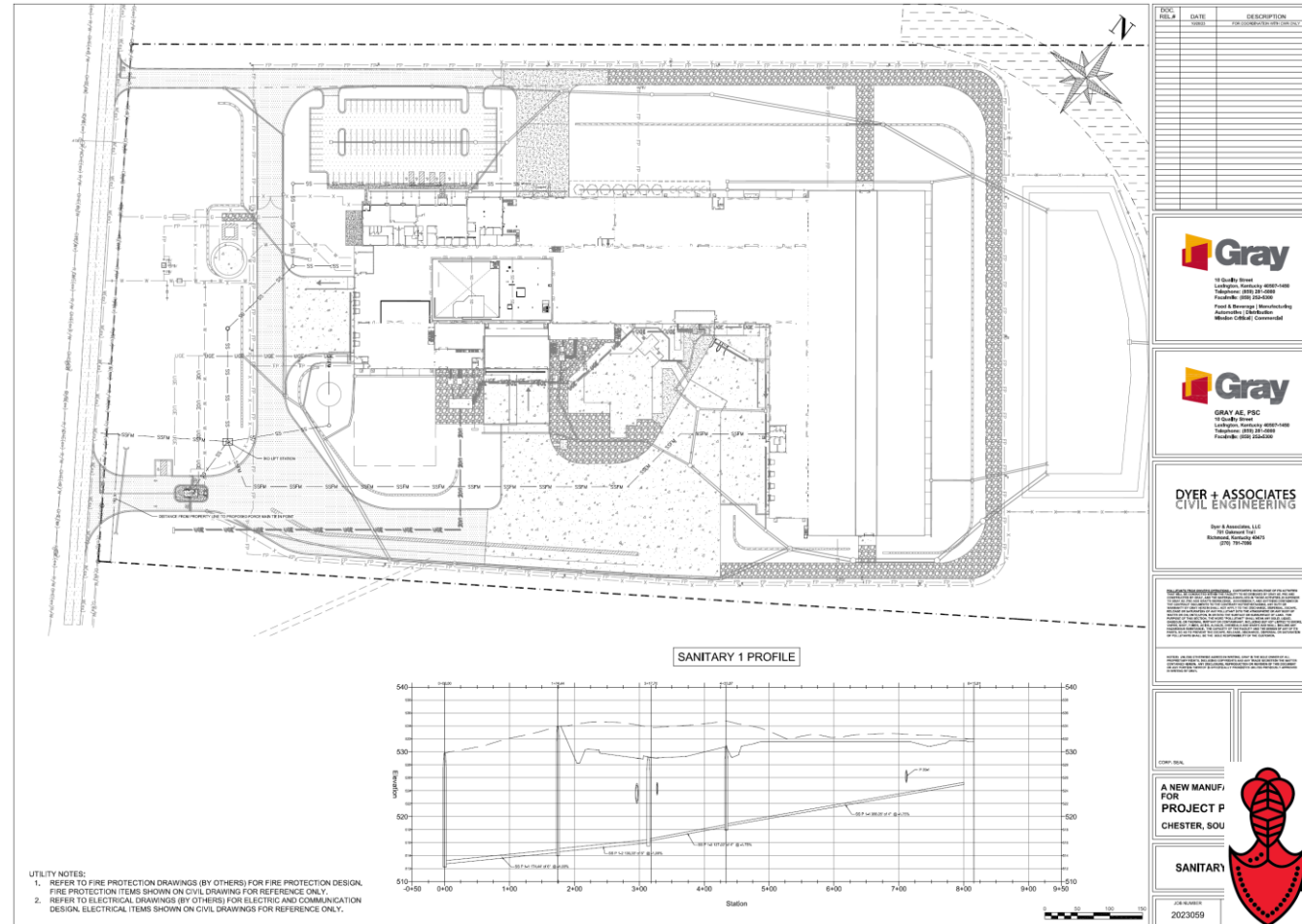


Image: Charlotte Business Journal



Image: Charlotte Business Journal

FEBRUARY



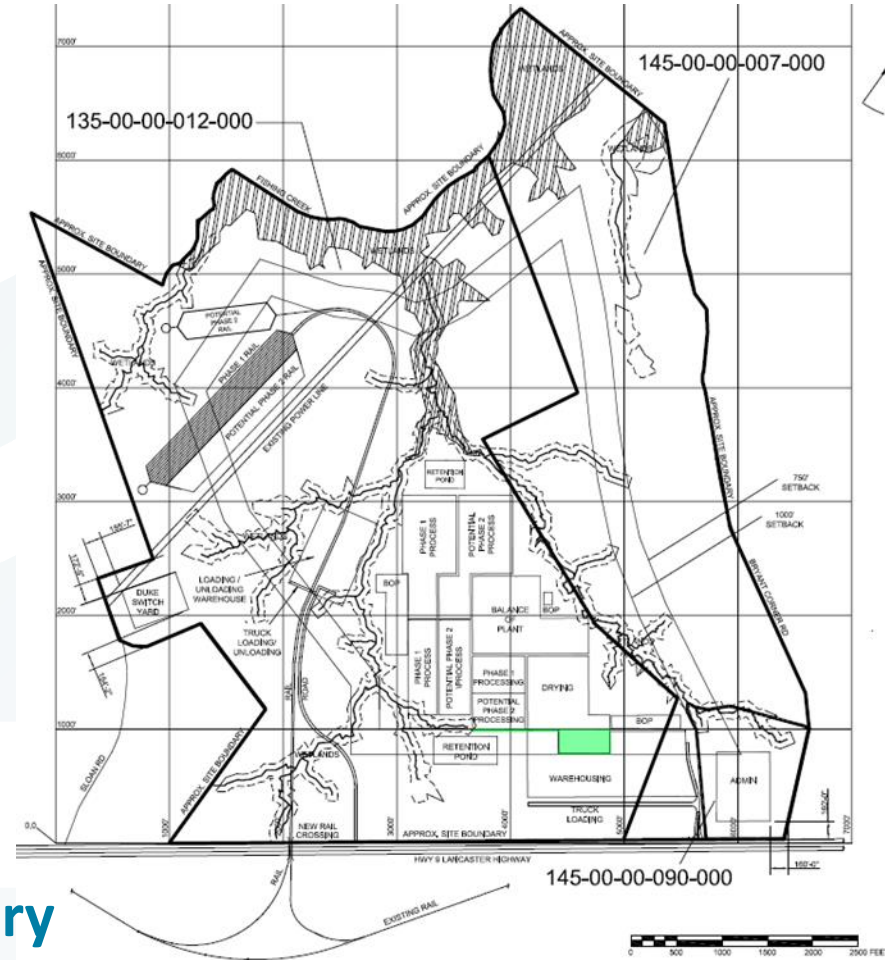
\$363 million
180 jobs



MARCH



MARCH



\$1.3 billion
307 jobs
\$93,000/yr average salary

MARCH



Top 5 Largest Capital Investment Projects in SC History in Tier 3/Tier 4 Counties

- #1 Albemarle Corporation
- #2 Giti Tire
- #4 E. & J. Gallo Winery
- #5 IKO Industries

APRIL



MAY



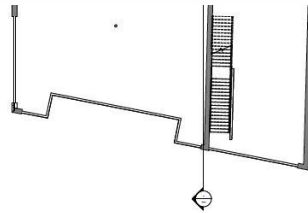
Selected to SCEDA Board



JULY



THE SCHLOSBURG BUILDING
140 GASDEN STREET, CHESTER,
SOUTH CAROLINA



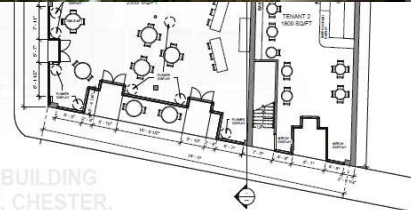
1 MEZZ FLOOR
A-102
1/8" = 1'-0"



2 SECOND FLOOR PLAN
1/8" = 1'-0"



THE SCHLOSBURG BUILDING
140 GASDEN STREET, CHESTER,
SOUTH CAROLINA



2 FIRST FLOOR PLAN 20s STOREFRONT
A-101
1/8" = 1'-0"

\$3.4 million



SEPTEMBER



Silver Award for General Purpose Website

Bronze Award for Economic Development Organization (EDO) of the Year



INTERNATIONAL
ECONOMIC DEVELOPMENT
COUNCIL



**2023 EXCELLENCE
IN ECONOMIC
DEVELOPMENT
AWARDS**

CHOOSE  CHESTER

NOVEMBER



NOVEMBER



\$25.7 million
10 jobs



We protect
what matters most™
Protegemos lo que más importa




PRIMEROCK
ENERGY CAPITAL

CHOOSE  CHESTER

JANUARY



**South Carolina**
Department of Commerce

**2023
RECRUITMENT
OVERVIEW**
A review of economic development
projects announced by S.C. Commerce

\$9.22B
CAPITAL
INVESTMENT

2nd
HIGHEST
INVESTMENT
AMOUNT IN
STATE HISTORY

14,000+
JOBS
ANNOUNCED

LEADING INDUSTRIES OF 2023
BY CAPITAL INVESTMENT

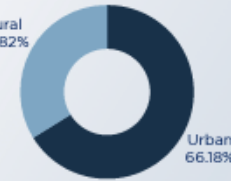
NO. 1
AUTOMOTIVE,
EV AND EV
BATTERIES
\$4.3B

NO. 2
ALTERNATIVE
ENERGY AND
FUELS
\$1.56B

TOP 10 ANNOUNCEMENTS
BY INVESTMENT

SCOUT MOTORS **\$2B**
ALBEMARLE CORPORATION **\$1.3B**
QTS DATA CENTERS **\$1B**
AESC FLORENCE **\$810M**
E-VAC MAGNETICS **\$506M**
ZF TRANSMISSIONS GRAY COURT **\$500M**
PALLIDUS **\$443M**
IKO **\$363M**
CIRBA SOLUTIONS **\$300M**
NISSIN FOODS **\$228M**

Percentage of total **capital investment** by community type.



Rural 33.82%
Urban 66.18%

Rural communities describes county development Tiers III and IV, as calculated annually by the **South Carolina Department of Revenue**.

CHOOSE  CHESTER

JANUARY



South Carolina
Department of Commerce

2023 RECRUITMENT OVERVIEW
A review of economic development projects announced by S.C. Commerce

\$9.22B
CAPITAL INVESTMENT

2nd
HIGHEST INVESTMENT AMOUNT IN STATE HISTORY

14,000+
JOBS ANNOUNCED

LEADING INDUSTRIES OF 2023
BY CAPITAL INVESTMENT

NO. 1
AUTOMOTIVE, EV AND EV BATTERIES
\$4.3B

NO. 2
ALTERNATIVE ENERGY AND FUELS
\$1.56B

TOP 10 ANNOUNCEMENTS
BY INVESTMENT

SCOUT MOTORS	\$2B
ALBEMARLE CORPORATION	\$1.3B
QTS DATA CENTERS	\$1B
AESC FLORENCE	\$810M
E-VAC MAGNETICS	\$506M
ZF TRANSMISSIONS GRAY COURT	\$500M
PALLIDUS	\$443M
IKO	\$363M
CIRBA SOLUTIONS	\$300M
NISSIN FOODS	\$228M

Percentage of total capital investment by community type.

Rural 33.82%
Urban 66.18%

Rural communities describes county development Tiers III and IV, as calculated annually by the South Carolina Department of Revenue.

2 of the Top 10 Projects
18% of the investment in SC



JANUARY

A graphic celebrating the Deal of the Year Impact Award for Albemarle Corporation. It features a hand holding a glass award trophy filled with white powder. The background is a blurred image of an Albemarle sign. Text overlays include the Business Facilities logo, the award title, the company name, and the deal value and job count. A circular seal on the right commemorates the 2023 award.

BF BUSINESS FACILITIES

DEAL OF THE YEAR IMPACT AWARD

ALBEMARLE CORPORATION

\$1.3 BILLION & 307 JOBS

2023
BUSINESS FACILITIES
IMPACT AWARD
WINNER
DEAL OF THE YEAR

CHOOSE **JC** CHESTER



JANUARY

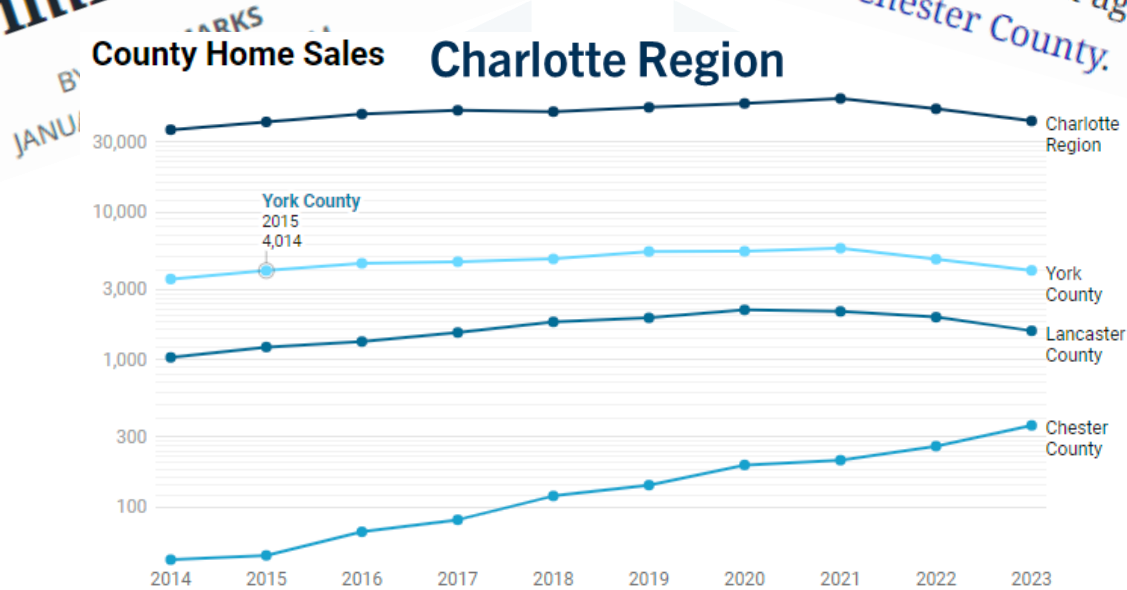


The Herald

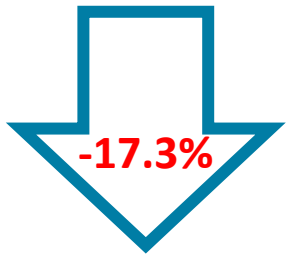
Homes sales dropped again across the Charlotte metro, but one SC spot is still immune

Charlotte metro home sales are down again, in total count and for many places in price — but don't blame Chester County.

in total count and for many places in



Charlotte Region



JANUARY

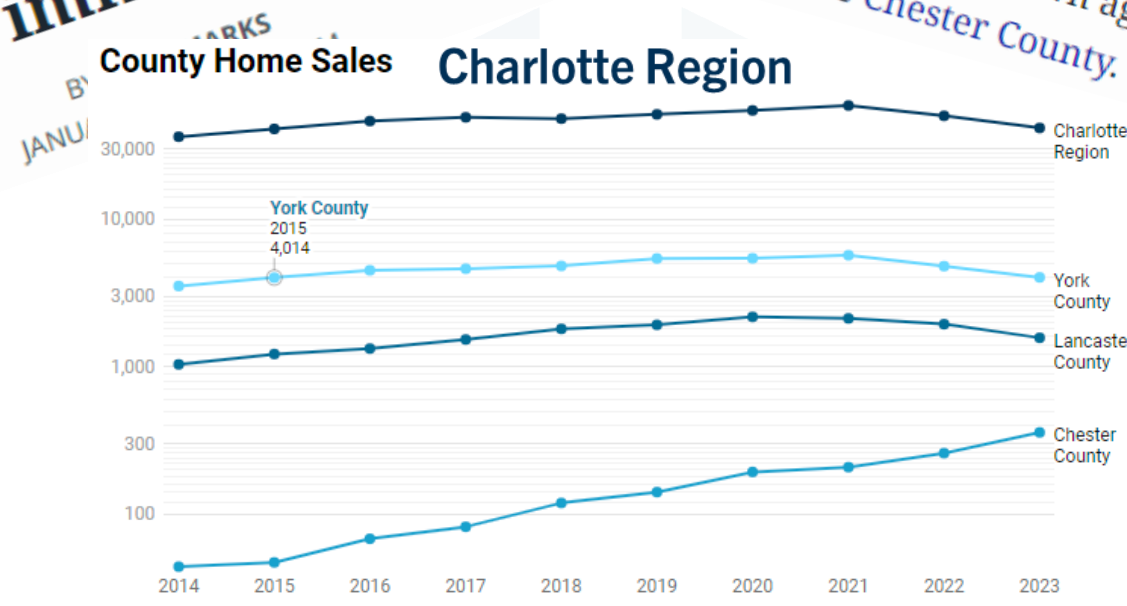


The Herald

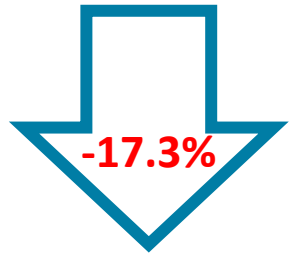
Homes sales dropped again across the Charlotte metro, but one SC spot is still immune

Charlotte metro home sales are down again, in total count and for many places in price — but don't blame Chester County.

in total count and for many places in



Charlotte Region



Chester County





CHOOSE  CHESTER